

# Design Summary

31 Units with 63 parking spaces provided  
 Private Open Space requirement =  $31 \times 75 = 2325$   
 Private Open Space provided = 2030  
 Therefore Communal Space requirement = 295  
 Communal Space provided = 430  
 This exceeds requirements by 135 sq.m.

Clothes Drying area and Rainwater Tank provided for each individual unit

On-site Stormwater retention facility

Fire Appliances have access throughout the internal road system (2 fire hydrants required)

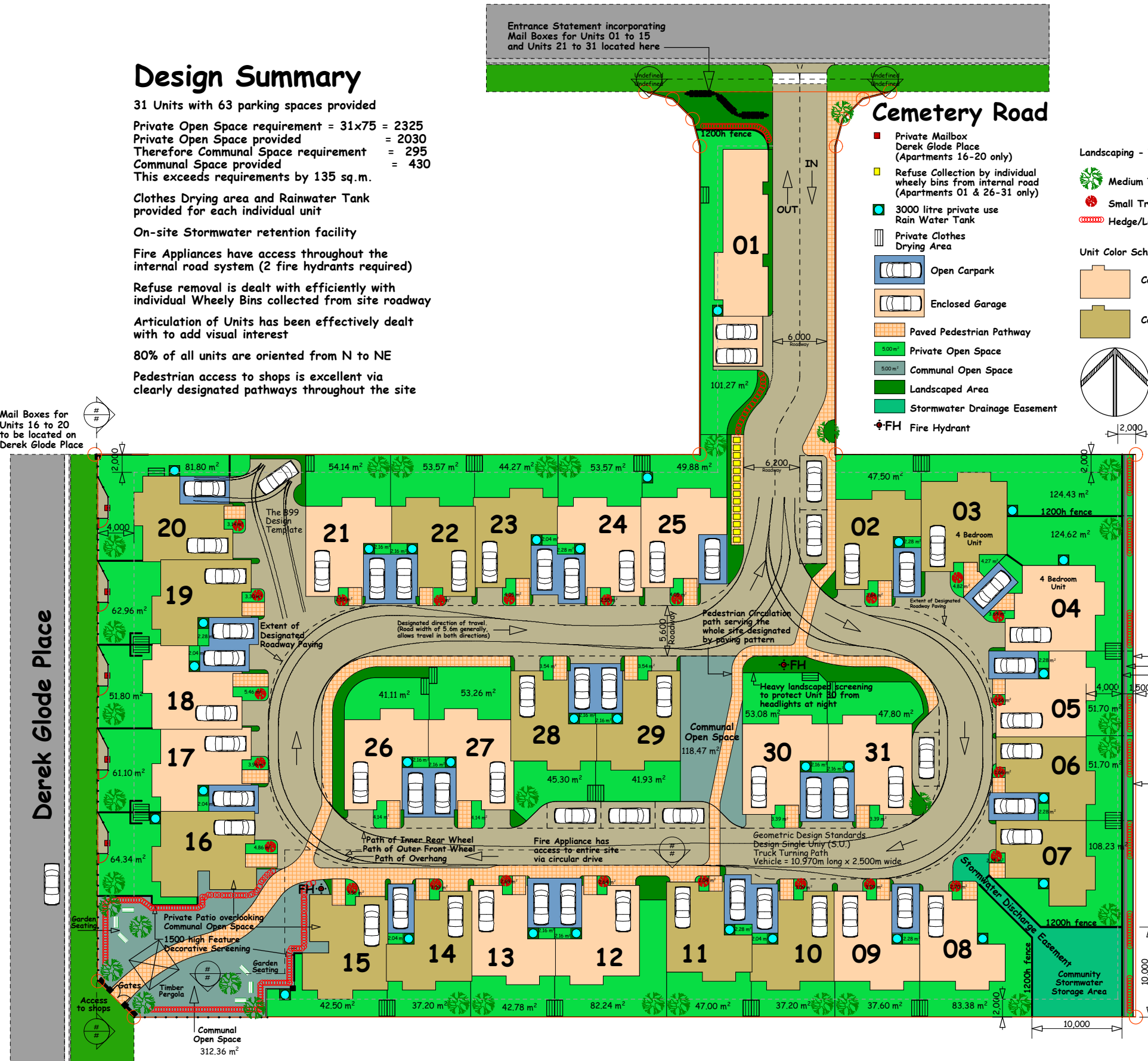
Refuse removal is dealt with efficiently with individual Wheely Bins collected from site roadway

Articulation of Units has been effectively dealt with to add visual interest

80% of all units are oriented from N to NE

Pedestrian access to shops is excellent via clearly designated pathways throughout the site

Mail Boxes for Units 16 to 20 to be located on Derek Glode Place



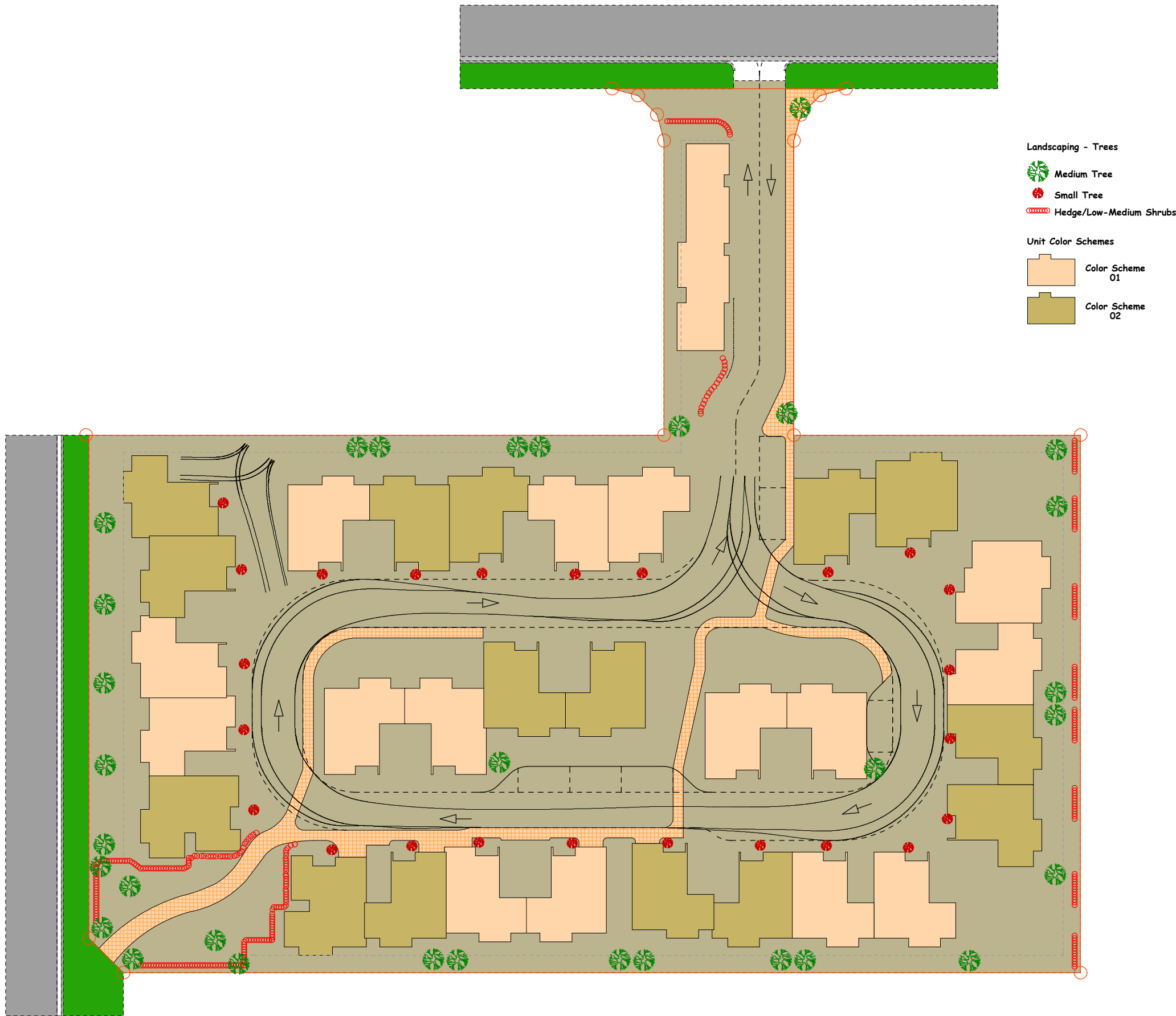
Entrance Statement incorporating Mail Boxes for Units 01 to 15 and Units 21 to 31 located here

## Cemetery Road

- Private Mailbox Derek Glode Place (Apartments 16-20 only)
  - Refuse Collection by individual wheely bins from internal road (Apartments 01 & 26-31 only)
  - 3000 litre private use Rain Water Tank
  - Private Clothes Drying Area
  - Open Carpark
  - Enclosed Garage
  - Paved Pedestrian Pathway
  - Private Open Space (5.00 m²)
  - Communal Open Space (5.00 m²)
  - Landscaped Area
  - Stormwater Drainage Easement
  - ◆ FH Fire Hydrant
- Landscaping - Trees
- Medium Tree
  - Small Tree
  - Hedge/Low-Medium Shrubs
- Unit Color Schemes
- Color Scheme 01
  - Color Scheme 02

<b>CLIENT:</b>	Derek Glode
<b>PROJECT:</b>	Proposed Apartments
<b>SITE:</b>	Derek Glode Place Raceview
<b>PROJECT NUMBER:</b>	07-0314
<b>DRAWING NUMBER:</b>	2
<b>DATE OF ISSUE:</b>	28/03/2008 12:57 PM

**john hughes design**  
 jxdesign@bigpond.net.au  
 0412 221461



**CLIENT:**  
Derek Glode

**PROJECT:**  
Proposed Apartments

**SITE:**  
Derek Glode Place  
Raceview

**PROJECT NUMBER:**  
07-0314

**DRAWING NUMBER:**  
4

**DATE OF ISSUE:**  
28/03/2008 12:58 PM

**john hughes design**  
jxdesign@bigpond.net.au  
0412 221461

Core Landscaping Layout A3 Sheet 1:500